



Welcome to National Able Network

76,339

Job Seekers Served

GRACE POWERS
PRESIDENT & CEO

MAY PAO
BOARD CHAIR

able!^a

National Able Network®

2015 YEAR IN REVIEW

FINANCIAL STATEMENTS

CONSOLIDATED STATEMENT OF ACTIVITIES

FOR THE PERIOD ENDED JUNE 30, 2015

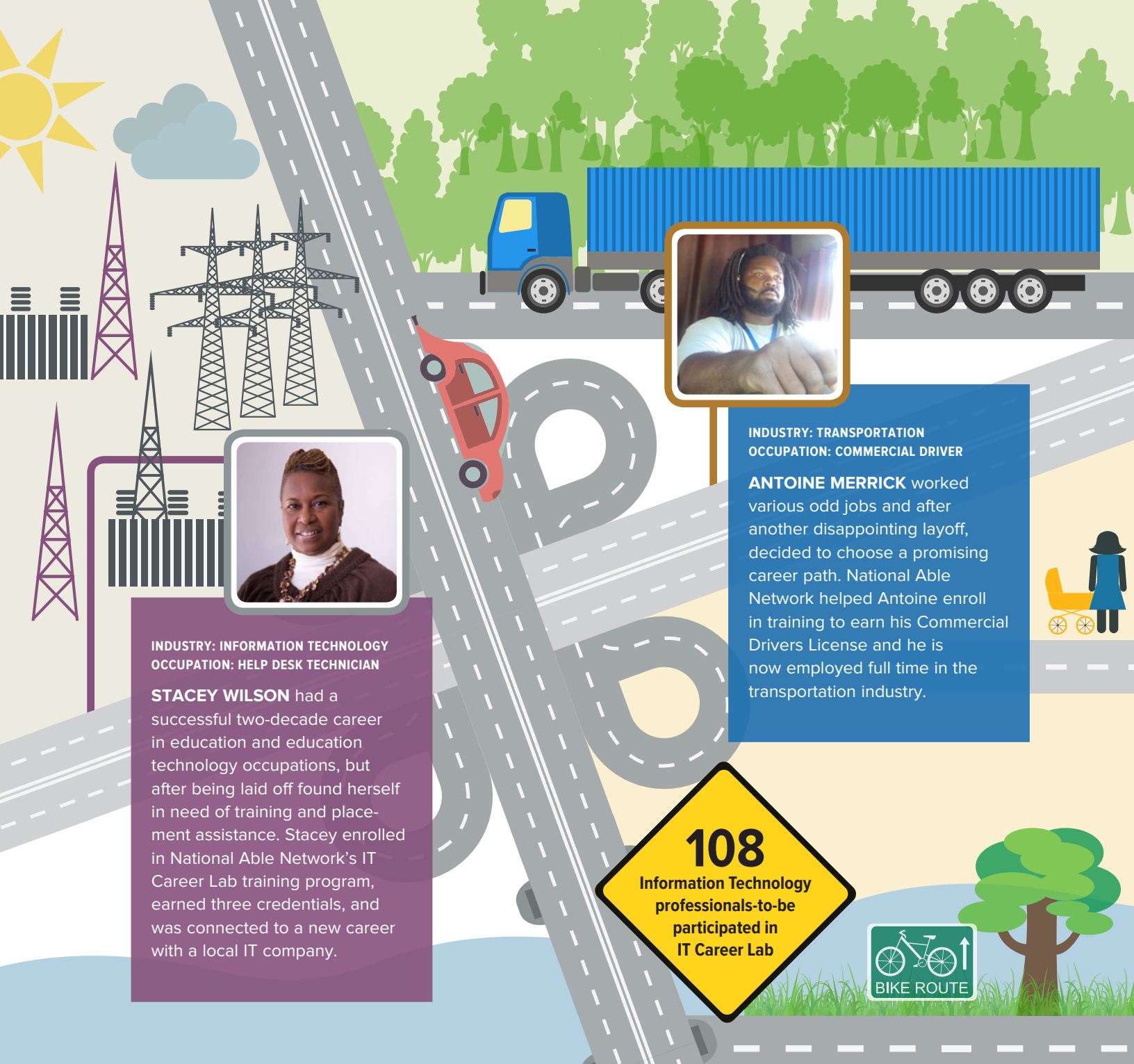
	2015
Revenues	
Total Revenues	\$ 18,954,902
Expenses	
Program Services	16,133,568
Support Services	1,665,245
Total Expenses	17,798,813
Excess of Assets Aquired Over	
Liabilities – CareerPlace	165,847
Change in Net Assets	1,321,936
Net Assets	
Beginning of Year	162,725
End of Year	\$ 1,484,661

**NATIONAL ABLE NETWORK
THANKS ALL OF OUR
SUPPORTERS FOR
MAKING OUR
MISSION POSSIBLE.**

CONSOLIDATED STATEMENTS OF FINANCIAL POSITION

AS OF JUNE 30, 2015

	2015
ASSETS	
Current Assets	
Cash	\$ 1,491,863
Net Receivables	1,979,566
Promises to Give	37,500
Deposit	150,000
Prepaid Expenses	75,188
Total Current Assets	3,734,117
Net Furniture and Equipment	57,565
Deposits	80,633
Total Assets	\$ 3,872,315
LIABILITIES AND NET ASSETS	
Current Liabilities	
Accounts Payable – Trade	\$ 550,622
Other Liabilities	758,320
Total Current Liabilities	1,308,942
Long-Term Liabilities	
Deferred rent obligation	1,078,712
Total Liabilities	2,387,654
Net Assets	
Net assets	1,484,661
Total Liabilities	\$ 3,872,315



INDUSTRY: INFORMATION TECHNOLOGY
OCCUPATION: HELP DESK TECHNICIAN

STACEY WILSON had a successful two-decade career in education and education technology occupations, but after being laid off found herself in need of training and placement assistance. Stacey enrolled in National Able Network's IT Career Lab training program, earned three credentials, and was connected to a new career with a local IT company.



INDUSTRY: TRANSPORTATION
OCCUPATION: COMMERCIAL DRIVER

ANTOINE MERRICK worked various odd jobs and after another disappointing layoff, decided to choose a promising career path. National Able Network helped Antoine enroll in training to earn his Commercial Drivers License and he is now employed full time in the transportation industry.

In our communities, the streets are lined with businesses that partner with National Able Network to source qualified job candidates. Workers and businesses are the essential infrastructure of thriving communities. At National Able Network, we equip job seekers with the skills and resources needed to compete in a global economy.

We take a great sense of pride knowing that thousands of job seekers reignite their passion for learning when they partake in career training offerings at National Able Network. Our mission and core

values pave the way. Building a community of lifelong learners is central to our core mission. The job market is improving and the way that job seekers become job applicants is changing. National Able Network offers a wealth of training and career coaching that helps each and every job seeker adapt to new job applicant technologies and job search techniques.

Our **Job Readiness Training Program** team had a busy year: they piloted new workshop titles and also trained nearly 1,300 job seekers across all five states in which we operate.



85%

Launch new careers
with the Workforce
Services team



INDUSTRY: NON-PROFIT
OCCUPATION: LIBRARY ASSISTANT

LEE HOWITT had a successful career until 2011 when a medical condition kept him from working for nearly two years. National Able Network helped Lee rebuild his confidence and acquire new computer skills, and he was hired as a Library Assistant.

STORE



INDUSTRY: RETAIL
OCCUPATION: PRODUCT FULFILLMENT
SPECIALIST

At just 18 years old, **LADIAMOND KEMP** had a keen awareness of her personal strengths, and was very eager to build from that foundation with the new Retail Career Lab training program. Her ambitions and hard work in the classroom paid off; LaDiamond was hired at a large e-commerce company after completing the program!

Throughout the Midwest and the East Coast, our **Senior Services** team helped 1,466 mature workers provide 785,317 working hours at non-profit organizations in their communities.

The **Workforce Services** team helped 950 job seekers launch new careers with comprehensive career coaching and connections to career training programs throughout the greater Chicagoland area. Job seekers who completed career training programs to launch new careers experienced exceptional returns; receiving an average 18.7 percent increase in annual earnings.

The **Veterans Forward** team provided 381 job seekers with leading-edge military-to-civilian career transition assistance. Hiring managers continued to request our help in locating job seekers with military backgrounds, so we provided job candidate referrals and monthly training seminars to help them understand the distinctive assets veterans offer.

This year, our **adult education** and general equivalency diploma students completed 11,340 hours of classroom training using our workplace-contextualized literacy curricula founded in evidence-based practices.



INDUSTRY: HEALTHCARE
OCCUPATION: OCCUPATIONAL THERAPIST

GEORGE PRISTAVU served in the Romanian Air Force before immigrating to the US in 2000, and found work in an entry-level data entry position. National Able Network helped George enroll in training and start a new career path as an Occupational Therapist, which doubles his annual salary from his previous position!



INDUSTRY: PROFESSIONAL SERVICES
OCCUPATION: STUDY MANAGEMENT
ASSOCIATE

CULLEN CHAKEEN served in the U.S. Marine Corps and earned his Bachelor of Science degree, but was in need of assistance to develop a resume and professional profile to enter into his new career path. National Able Network provided workshops and one-on-one assistance, as well as a direct referral to his new position as a Study Management Associate.



The need for qualified information technology professionals remains high as the industry continues to experience substantial growth, especially in Chicago where our innovative training program, **IT Career Lab**, is headquartered. In the past program year, 85 percent of students earned at least two professional credentials, and 7 percent of the overall student population achieved a perfect score on the most challenging of all examinations, the Cisco Certified Network Associate (CCNA).

We are taking our success in developing a talent pipeline of IT professionals, and creating a dynamic

sector strategy for the retail industry which incorporates training and placement services for middle-skill careers. Visit our website and social media sites to read success stories from our new **Retail Career Lab** pilot program!

Each year, National Able Network creates more value for jobseekers and businesses through our service innovations and ever-growing expertise in meeting the needs of stakeholders on all sides of the career-making equation. Thanks to the staff members of all these dynamic programs, we continue on the road to bringing permanent change to the lives of more clients!

BOARD OF DIRECTORS

CHAIR

May Pao
Consultant
Bridge Partners

VICE CHAIR

Carolyn Dolezal
Vice President, Strategy and
Chief Marketing Officer
PCTEL, Inc.

SECRETARY

Grailing Jones
Director
Schneider Finance, Inc.

TREASURER

David Zimmer
Senior Vice President,
Regional Business Sales
BMO Harris Bank

DIRECTORS

Grace Powers
President & CEO
National Able Network, Inc.

Debra D. Matlock, Esq.
Director of Purchasing
University of Illinois at Chicago

Therese Vande Hey
Senior Counsel
ArcelorMittal USA LLC

Kathryn Ross
Technology Account Lead, Life Sciences
Accenture

Frank Poggio
CEO
The Kelzon Group

Phillip Roussel
Volunteer Career Coach
Retired

PARTIAL LIST OF FUNDING PARTNERS AND SPONSORS

GOVERNMENT

U.S. Department of Labor

Illinois Department of Commerce and
Economic Opportunity

Chicago Cook Workforce Partnership

Indiana Department of Workforce Development

Illinois Department on Aging

Indiana Region 9 Workforce Board, Inc.

Chicago Department of Family and Support Services

Senior Service America, Inc.

Illinois Community College Board

PRIVATE

Walmart Foundation

Robert R. McCormick Foundation

Bank of America

Searle Funds at the Chicago Community Trust

Lloyd A. Fry Foundation

United Way

Call of Duty Endowment

Dr. Scholl Foundation

Northern Trust Charitable Trust



www.nationalable.org

