A vibrant graphic for the Information Technology Sector Center. It features a central teal rounded rectangle with the title in white. Surrounding it are various icons: a globe with a magnifying glass, a laptop with a Wi-Fi symbol, a house with computer icons, a speech bubble, and a laptop with an arrow. The background is composed of overlapping circles and hexagons in shades of green, orange, and blue, with several arrows pointing in different directions.

INFORMATION TECHNOLOGY SECTOR CENTER

POWERED BY NATIONAL ABLE NETWORK

able!
National Able Network®

TRAIN

- Develop a **winning resume** and **prepare for the interview** with assistance from our team of coaches
- Attend **exclusive industry hiring and screening events**
- Participate in **paid, on-the-job training** with local businesses



DID YOU KNOW...

Information Technology professionals gain an average **9 percent salary increase immediately after receiving certification**, and **29 percent over the long term**, versus peers who are not certified.

*COMPTIA EMPLOYER PERCEPTIONS OF IT TRAINING AND CERTIFICATION

“Through ongoing communication and understanding our ever-evolving IT environment’s needs and goals, National Able Network has become a proactive and trusted partner in helping us grow the technology field.”

– JASON OKROY,
SALUTE, INC.

HIRE

- Screen and hire from a **talent pool of job-ready information technology candidates**
- Receive **subsidized on-boarding and on-the-job training** for new hires
- Using the Information Technology Sector Center’s Business Solutions can **save an average of 65 percent of the cost of new employee training**



SEEK

- Discover and plan your **Information Technology career pathway**
- Gain **access to available job listings** suited to your experience and skills
- **Enter the workforce** seamlessly with connections to local Chicagoland businesses **looking to hire**



“National Able Network helped me develop a new career path. Transitioning from a military career to a civilian career can be challenging, but there was always someone available to offer support as I pursued my goals.”

– DAVID VIKTORA,
HELP DESK SUPPORT SPECIALIST,
FRAMEWORK COMMUNICATIONS



THE COST OF EMPLOYEE TURNOVER

1/5 OF A WORKER'S ANNUAL SALARY

CHICAGO TOPPED NEW YORK AND LOS ANGELES IN TECH JOB GROWTH WITH A

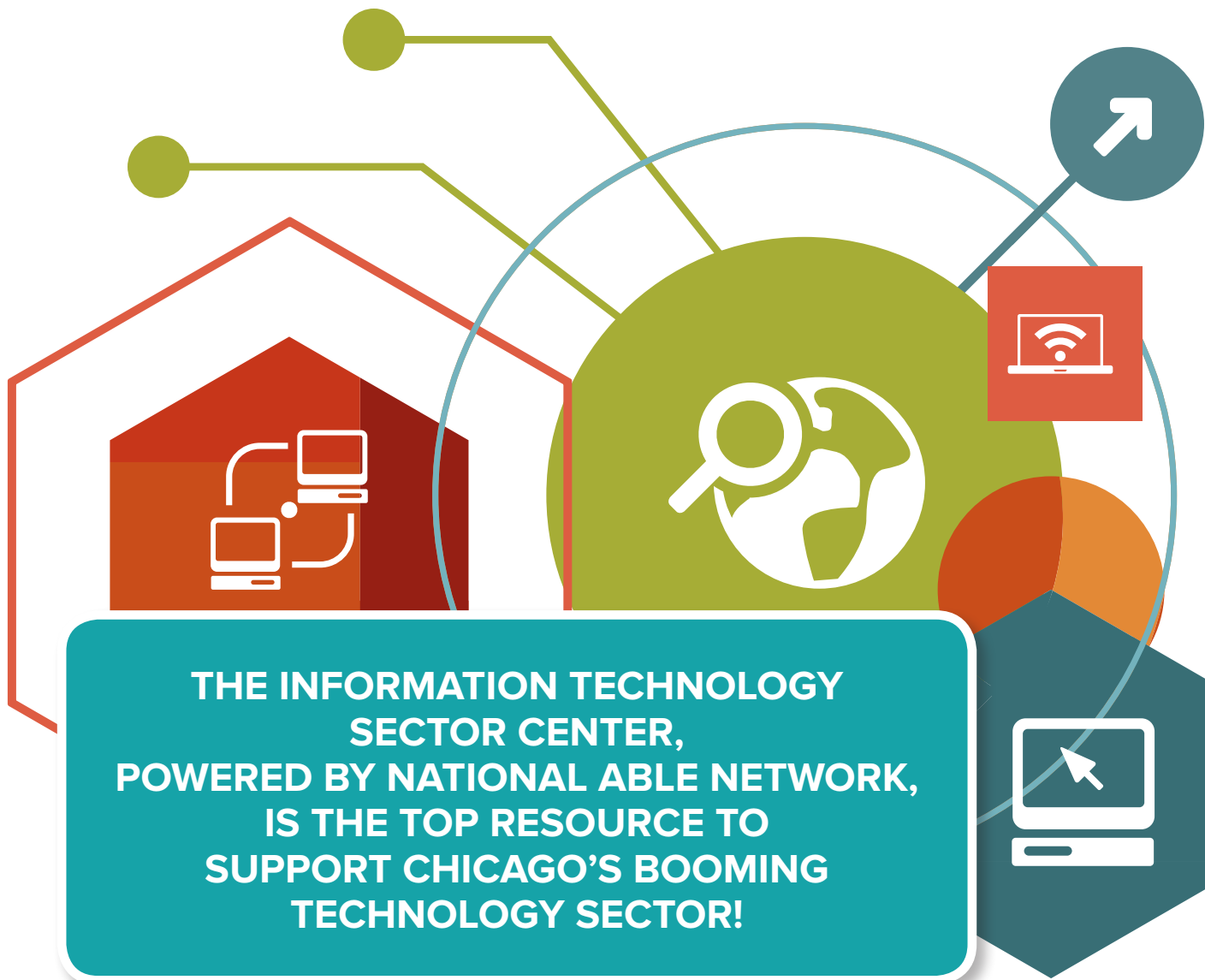
35% INCREASE
BETWEEN 2010–2015

THE IT FIELD

GREW 78%
IN CHICAGO LAST YEAR

42,000
JOB OPENINGS IN
CHICAGO IN 2015





**THE INFORMATION TECHNOLOGY
SECTOR CENTER,
POWERED BY NATIONAL ABLE NETWORK,
IS THE TOP RESOURCE TO
SUPPORT CHICAGO'S BOOMING
TECHNOLOGY SECTOR!**

567 W. Lake Street, Suite 1150

Chicago, IL 60661

312.994.4342

itjobs@nationalable.org



CHICAGO COOK
WORKFORCE
PARTNERSHIP

A proud partner of the
AmericanJobCenter[®]
network

POWERED BY
NATIONAL ABLE NETWORK

able![®]
National Able Network[®]

Funding for this program is made possible by The Chicago Cook Workforce Partnership.
National Able Network is an equal opportunity employer/program. Auxiliary aids and services are available upon request.