The graphic features a central teal rounded rectangle with the text 'INFORMATION TECHNOLOGY SECTOR CENTER'. Surrounding this are various icons: a globe with a magnifying glass, a laptop with a Wi-Fi symbol, a house with computer icons, a speech bubble, and a laptop with an arrow. There are also several arrows pointing in different directions and a network of lines connecting nodes.

# INFORMATION TECHNOLOGY SECTOR CENTER

POWERED BY NATIONAL ABLE NETWORK

**able!**  
National Able Network®

# TRAIN

- Develop a **winning resume** and **prepare for the interview** with assistance from our team of coaches
- Attend **exclusive industry hiring and screening events**
- Participate in **paid, on-the-job training** with local businesses



## DID YOU KNOW...

Information Technology professionals gain an average **9 percent salary increase immediately after receiving certification**, and **29 percent over the long term**, versus peers who are not certified.

\*COMPTIA EMPLOYER PERCEPTIONS OF IT TRAINING AND CERTIFICATION

“Through ongoing communication and understanding our ever-evolving IT environment’s needs and goals, National Able Network has become a proactive and trusted partner in helping us grow the technology field.”

– JASON OKROY,  
SALUTE, INC.

# HIRE

- Screen and hire from a **talent pool of job-ready information technology candidates**
- Receive **subsidized on-boarding and on-the-job training** for new hires
- Using the Information Technology Sector Center’s Business Solutions can **save an average of 65 percent of the cost of new employee training**



# SEEK

- Discover and plan your **Information Technology career pathway**
- Gain **access to available job listings** suited to your experience and skills
- **Enter the workforce** seamlessly with connections to local Chicagoland businesses **looking to hire**



“National Able Network helped me develop a new career path. Transitioning from a military career to a civilian career can be challenging, but there was always someone available to offer support as I pursued my goals.”

– DAVID VIKTORA,  
HELP DESK SUPPORT SPECIALIST,  
FRAMEWORK COMMUNICATIONS



## THE COST OF EMPLOYEE TURNOVER

**1/5** OF A WORKER'S ANNUAL SALARY

CHICAGO TOPPED NEW YORK AND LOS ANGELES IN TECH JOB GROWTH WITH A

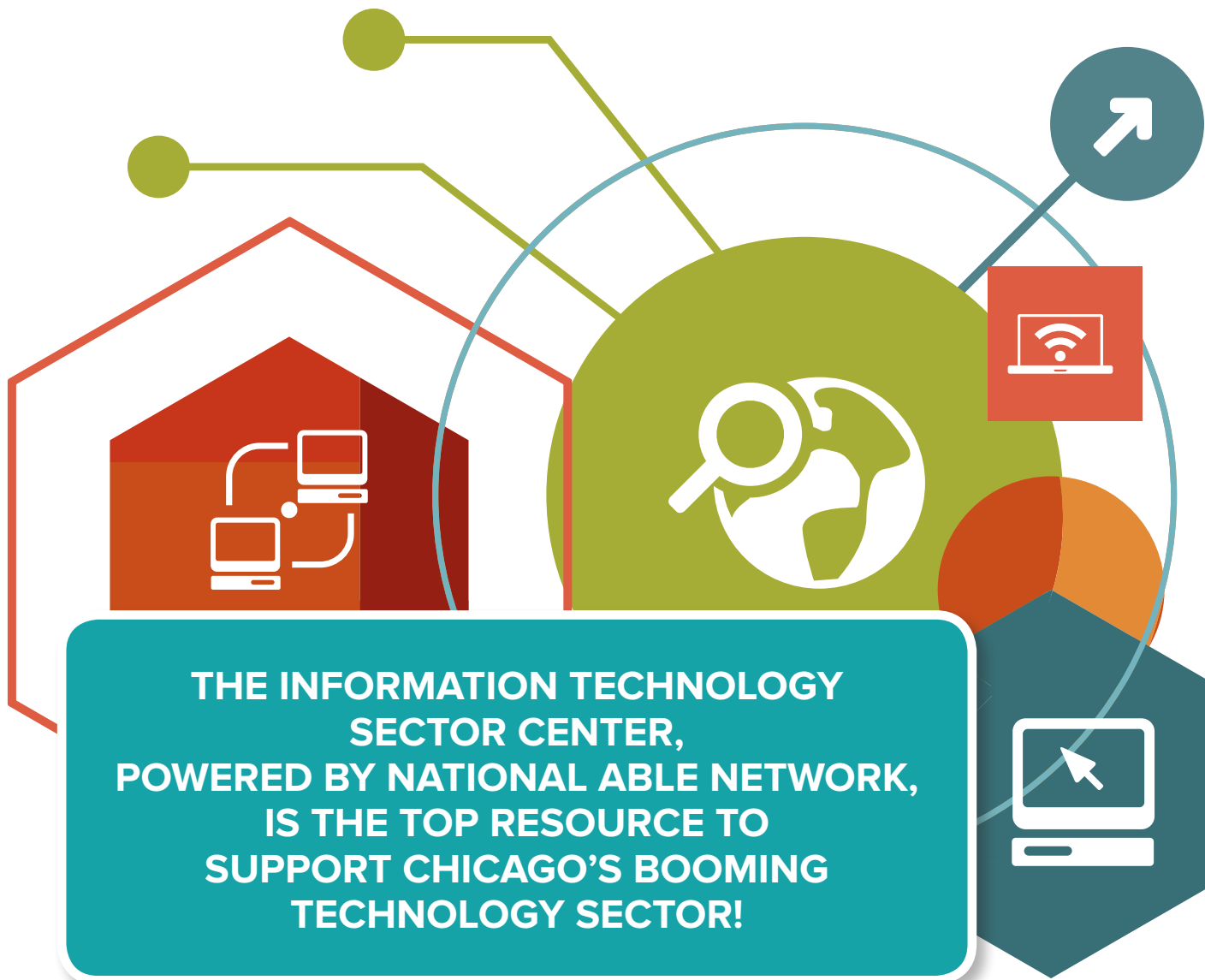
**35% INCREASE**  
BETWEEN 2010–2015

THE IT FIELD

**GREW 78%**  
IN CHICAGO LAST YEAR

**42,000**  
JOB OPENINGS IN  
CHICAGO IN 2015





**THE INFORMATION TECHNOLOGY  
SECTOR CENTER,  
POWERED BY NATIONAL ABLE NETWORK,  
IS THE TOP RESOURCE TO  
SUPPORT CHICAGO'S BOOMING  
TECHNOLOGY SECTOR!**

567 W. Lake Street, Suite 1150

Chicago, IL 60661

312.994.4342

[itjobs@nationalable.org](mailto:itjobs@nationalable.org)



CHICAGO COOK  
WORKFORCE  
PARTNERSHIP

A proud partner of the  
**AmericanJobCenter**<sup>®</sup>  
network

POWERED BY  
NATIONAL ABLE NETWORK

**able!**<sup>®</sup>  
National Able Network<sup>®</sup>

Funding for this program is made possible by The Chicago Cook Workforce Partnership.  
National Able Network is an equal opportunity employer/program. Auxiliary aids and services are available upon request.